



INTERPROFESSIONAL WORKSHOP SERIES
IMPLEMENTING BEST PRACTICES

Best Practice in Epilepsy

30—31 March 2007

FINAL PROGRAM



GRANVILLE ISLAND HOTEL
1253 JOHNSTON STREET, VANCOUVER, BC

ORGANISED BY:

Child Health BC
Rm 2H2—4480 Oak Street, Vancouver, BC V6H 3V4
Tel: (604) 875-2345 ex. 5305 Fax: (604) 875-2074


in partnership with

The Department of Neurology
BC Children's Hospital

Enquiries to: hchisholm@cw.bc.ca



BEST PRACTICE IN EPILEPSY TABLE OF CONTENTS



Introduction	page 1
Workshop Agenda	page 2-3
Workshop Presenters	page 4-8
Participant Team List	pages 9-10
Resource List	page 11
Workshop List	page 12-13
Granville Island Map	pages 14-15
Expense Form	page 16

INTRODUCTION

BACKGROUND

This workshop on best practices in epilepsy is presented in partnership with the BC Children's Hospital Department of Neurology, and is sponsored by the BC Children's Hospital Foundation. The workshop will provide an opportunity to build regional inter-professional team capacity for the planning and implementation of provincial standards of care for the management of children and youth with epilepsy. The purpose of this workshop is to roll out the Division of Neurology's new guidelines on the management of epilepsy and to discuss their implementation within the Health Authorities in British Columbia.

WORKSHOP THEMES

- 1) Medical guidelines;
- 2) Parent, family and school education;
- 3) Management of learning difficulties in children with epilepsy;
- 4) Management of psychopathology in the child and family; and
- 5) Social aspects of epilepsy.

KEY OBJECTIVES

- 1) To present evidence based guidelines on the diagnosis and management of epilepsy in children and youth;
- 2) To review how best to educate families and individuals with epilepsy;
- 3) To review the impact of diagnosis of epilepsy on the family and individuals with epilepsy;
- 4) To review the influence of epilepsy on cognition and learning;
- 5) To examine the psycho-social implications of epilepsy;
- 6) To provide an opportunity for the interprofessional participants to identify challenges and gaps in implementation of best practice and identify suggestions and strategies to fill the gaps; and
- 7) To contribute to building regional interprofessional team capacity by initiating or contributing to knowledge translation initiatives within health authorities after returning home.

DATE AND VENUE

The workshop will take place at the Granville Island Hotel, Vancouver, British Columbia, starting at 8:30 am on Friday March 30th and finishing at 12:00 pm on Saturday March 31st, 2007. For further detail on Granville Island see their website at www.granvilleislandhotel.com.

STYLE AND PARTICIPATION

The workshop size is limited to allow participants productive discussions and networking. Participants are encouraged to send cases and/or questions in advance of the workshop.

BEST PRACTICE IN EPILEPSY WORKSHOP AGENDA

Friday March 30th, 2007

8:00 am – 9:00 am	Registration & Breakfast	
9:00 am – 9:15 am	Opening Remarks by Dr. Bob Peterson and Dr. Mary Connolly	
9:15 am – 9:30 am	Introductions	
9:30 am – 9:50 am	Case-Based Presentations	Overview by Dr. Kevin Farrell
9:50 am – 10:30 am		MEDICAL ISSUES: “Using Medical Guidelines to Improve Epilepsy Care In Children”, presented by Dr. Mary Connolly.
10:30 am – 10:40 am		Break
10:40 am – 11:20 am		EMOTIONAL ISSUES: “A Parent’s Journey”, presented by Susan Murphy; and “Epilepsy and the Psychosocial Impact on the Child and Family” presented by Dr. Audrey Ho.
11:20 am – 12:00 pm		EDUCATIONAL ISSUES: “Epilepsy Education: Home, Hospital, and Community”, presented by Kelly McMillan, Kathryn Sykes, Francesca Zannotto and Patti Turner.
12:00 pm – 1:00 pm	Lunch	
1:00 pm – 1:40 pm	Case-Based Presentations	MEDICAL CASES: <ul style="list-style-type: none"> • Presentation TBA, by Dr. Kevin Farrell • Highlight of medical guideline issues where the guideline is based on limited evidence. • Discussion of how the medical guidelines would be finalized with input from BCCH, BC Pediatric Society, and the Canadian Pediatric Epilepsy Network.
1:40 pm – 2:20 pm		SCHOOL ISSUES: <ul style="list-style-type: none"> • “Epilepsy in the Classroom: Cognitive and Educational Challenges for Children with Epilepsy” by Dr. Sare Akdag and Patti Turner.
2:20 pm – 3:00 pm		TRANSITION ISSUES: <ul style="list-style-type: none"> • “Growing up is a Risky Business: Understanding Transitions and Challenges for Children with Epilepsy”, by Angie Kwok.
3:30 pm – 3:40 pm	Break	
3:30 pm – 5:00 pm	OPEN DISCUSSION: <ul style="list-style-type: none"> • Open microphone with presenter panel; • Opportunity for participants to discuss their individual cases and to ask questions. 	
5:00 pm – 6:00 pm	Free time	
6:00 pm – 8:30 pm	Reception and Dinner	

S a t u r d a y , M a r c h 3 1 ^{s t} , 2 0 0 7

8:00 am - 9:00 am	Breakfast	
9:00 am - 9:15 am		Opening Remarks
9:15 am - 9:45 am		FAMILY: <ul style="list-style-type: none"> • “Family Perspectives”, presented by Susan Murphy
9:45 am - 10:30 am		Introduction to Group Discussions by Dr. Bob Peterson GROUP DISCUSSION—HEALTH AUTHORITIES: <ul style="list-style-type: none"> • Health Authority specific discussions to identify gaps and strategies
10:30 am - 10:45 am		Break
10:45 am - 11:30 am		GROUP DISCUSSION—BY PROFESSIONS: <ul style="list-style-type: none"> • In break-out groups according to professions • Identification of gaps and strategies
11:30 am - 12:00 pm		SUMMARY: <ul style="list-style-type: none"> • Closing Remarks & Summary

INTERPROFESSIONAL:

Occasions when two or more professions learn with, from, and about each other to improve collaboration and the quality of care.

(Centre for the Advancement of Interprofessional Education, 1997)

BEST PRACTICE IN EPILEPSY WORKSHOP PRESENTERS

Dr. Robert Peterson

Robert Peterson, MD PhD, MPH received a M.D. degree and a Ph.D in Pharmacology from Yale University in 1974, having completed the National Institutes of Public Health sponsored Medical Scientist Training Program at that university. He was a resident in paediatrics at the Yale-New Haven Hospital until 1976 at which time he became a post-doctoral fellow in Clinical Pharmacology and Neonatology at the University of Colorado.

Dr. Peterson subsequently joined the Department of Pediatrics at the University of Colorado as Assistant Professor, where he was Director of the Section of Paediatric Clinical Pharmacology. In 1983, he joined the Departments of Paediatrics and Pharmacology at the University of Ottawa, Faculty of Medicine as Associate Professor and Medical Director of the Ontario Provincial Poison Information Centre at the Children's Hospital of Eastern Ontario. In 1987 he became Director of the Children's Hospital Research Institute. He became Professor of Paediatrics and Pharmacology in 1989, and in 1990, Chairman of the Department of Paediatrics and Paediatrician-in-chief. He has authored numerous papers/chapters in paediatric clinical pharmacology/toxicology.

Dr. Peterson completed a Master's of Public Health in the Department of Health Policy and Health Care Management at Harvard University School of Public Health in 1996. He joined the Therapeutic Products Program, Health Canada as Associate Director General in January 1999 and in July 2000, became the Director General of the Therapeutic Products Directorate. He left this post in March, 2005 to become Clinical Professor of Paediatrics at the University of British Columbia and Director of Child Health BC.

Dr. Mary Connolly

Mary Connolly, M.B., B.Ch., FRCP(I), FRCP(Ed), FRCP is a Clinical Associate Professor and the Head of the Division of Neurology in the Department of Pediatrics at the University of British Columbia, and the Director of the Epilepsy Surgery Program at BC's Children's Hospital. She graduated in medicine from Trinity College Dublin and trained in internal medicine and pediatrics in Ireland. She trained in pediatric neurology at the University of British Columbia and completed fellowship training in epilepsy and clinical neurophysiology at BC Children's Hospital and Children's Hospital, Boston. Since 1995 she has been Director of the Epilepsy Surgery Program at BC Children's Hospital and since January 2004, is head of the Division of Pediatric Neurology in the Department of Pediatrics at UBC.



Her clinical and academic interest are in the area of video-EEG monitoring, epilepsy surgery in children and the long-term outcome following epilepsy surgery in childhood especially the impact on seizure control, cognitive function and attention. She is interested in the comorbidity of neuropsychiatric illness in children with epilepsy and the area of non-epileptic seizures. She has a particular interest in clinical aspects of frontal lobe epilepsy in children and the associated cognitive, attention and behavioural symptoms and epileptic encephalopathy and the effects of interictal epileptiform activity on cognitive function.

Her current research studies involve comorbidity of psychiatric disorders in children with temporal lobe epilepsy, a prospective study of the influence of anti-epileptic drugs on attention and working memory, and a long term outcome study following epilepsy surgery in children, specifically frontal lobe epilepsy and hemispheric surgery.

Dr. Kevin Farrell

Dr. Kevin Farrell graduated in medicine from University of Edinburgh in 1968. Trained in Internal Medicine, Pediatrics and Neurology in Scotland and Toronto. Consultant Neurologist at Children's Hospital and Member of the Department of Pediatrics, University of British Columbia since 1979. Has a particular interest in epilepsy and has published over 90 papers, 30 chapters and edited one textbook on epilepsy in children.



Susan Murphy

Susan Murphy is the mother of two children. Her son Kevin has Lennox-Gastaut Syndrome, a severe form of epilepsy characterized by intractable seizures and developmental delay. She is a registered nurse working in the Endocrine Clinic at BC Children's Hospital and also a member of Partners In Care, the Parent Advisory Board for the hospital.

Susan has the unique perspective of being both a parent of a child with a chronic illness and a health care professional. She has presented at numerous conferences and workshops on the topics of Principles and Practices of Family Centered Care and Raising a Child with a Chronic Illness.



Dr. Audrey Ho

Audrey Ho, Ph.D. R.Psych. is a Clinical Psychologist at BC's Children's Hospital Neurosciences Programme. She works with young children, adolescents, and with families coping with a child with an acute neurological condition, trauma or chronic conditions. She specializes in non-epileptic seizures and psychosocial issues in epilepsy. The service focus on the child and the family employing a multimodel approach including psychodynamic theories in formulation, diagnosis, psychotherapy, play assessment and play therapy.



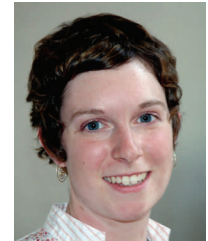
Kelly McMillan

Kelly McMillan, RN BSN is the Nurse Clinician for the Epilepsy Surgery Program at BC Children's Hospital. Kelly joined the nursing program at Children's in 1996 and has worked in neurology as a staff nurse both for in patients and ambulatory care for nine years. Kelly completed her diploma in nursing at Kwantlen University College in 1996 and graduated from the University of British Columbia with her Bachelor Degree in 2002. Kelly is a member of the BC Epilepsy programs committee.



Kathryn Sykes

Kathryn Sykes is a Registered Social Worker, and the Community Outreach Coordinator for the BC Epilepsy Society. She has a comprehensive understanding of the social impacts of epilepsy, and the needs of individuals and families who are living with seizures. She represents the BC Epilepsy Society as part of the caregiving team at the BC Children's Hospital Neurology Clinic, offering support and information to families from all parts of the province.



Francesca Zannotto

Francesca has been a nurse at BC Children's Hospital for 16 years after graduating from the University of Victoria. Francesca has worked in both Neurology in patients and Child Protection Units. For the last 10 years she has worked in the Neurology Ambulatory Clinic. Francesca is currently a Nurse Clinician for the Ketogenic Diet. Francesca is a member of the BC Epilepsy programs committee.

Patti Turner

Patti Turner is the Nursing Support Services Coordinator/Community Health Nurse on the Vancouver Regional Pediatric Team. She has worked at BC Children's Hospital from 1984-2000 on the Neuroscience Unit as a bedside nurse and a clinical nurse educator. She has worked as a NSS coordinator since early 2000, first in Richmond and currently in Vancouver.



Dr. Sare Akdag

Dr. Sare Akdag is a consultant in pediatric neuropsychology in the Department of Psychology at BC Children's Hospital. She graduated with a PhD in Clinical Psychology from the University of Massachusetts Boston. She completed her internship training with a focus in neuropsychology at Children's Hospital Boston/Harvard Medical School with a specialization in pediatric epilepsy.

Her clinical interests and expertise involves the comprehensive neuropsychological assessment of children and adolescents with epilepsy and other neurological disorders. She also provides consultation associated with epilepsy and other medical conditions of childhood. She is involved in teaching and supervising psychology students at all levels of training and is the program director for the Pediatric Neuropsychology Post-Doctoral Fellowship Program at BCCH. Her research interests include the neuropsychological sequelae of pediatric epilepsy surgery and the cognitive, developmental, and psychosocial outcomes of seizures in childhood.



Angie Kwok, M.S.W.

Executive Director of BC Centre for Ability, Angie Kwok worked as the Director of Social Work and Support Services from the Centre for Ability from 1991 to 2004. She received her Masters Degree in Social Work from the University Of Wisconsin. She has been working with children and adults with special needs for the past thirty years. She has extensive experiences in working with children, youth with epilepsy. She has been extremely active in promoting family centred practice in BC. She conducts many workshops for health care professionals on "Cultural Competency" "Family Empowerment Intervention" and "Building Effective Partnership with Families." She has published many articles on family centred practice and building on family strength. She sits on the professional advisory board of BC Epilepsy Society and is a board member of Social Worker in Health Society of BC.



PARTICIPANT TEAM LIST

NORTHERN HEALTH AUTHORITY

Dr. Tahir Chaudhry, Paediatrician, Prince George
Jennifer Hols, RN, Pediatric Nurse, Prince George
Jaclyn Zakresky, RN, Staff Nurse, Prince George
Sarah Van Leeuwen, School Psychologist, Prince George
Theresa H. (Terry) Beard, Social Worker, Fort St. John
Fatima Vido-Vechhio, Physical Therapist, Fort St. John
Dr. Jeffrey Simons, Pediatrician, Prince Rupert

INTERIOR HEALTH AUTHORITY

Joy Graham, RN, BN, Coordinator, Nursing Support Services for Children with Special Health Needs, Vernon
Dr. Katherine Gross, General Pediatrician, Penticton
Shannon Taylor, Maternal/Child Social Worker, Penticton
Pam McLuskey, RN, Public Health Nurse, Nursing Support Services Coordinator, Penticton
Anna Everson, Nurse, Respite Worker for Children with Special Needs, Kelowna

FRASER HEALTH AUTHORITY

Dr. Lionel Traverse, Pediatrician, Abbotsford
Hylda Gryba, Team Leader, Child & Youth Mental Health, Hope
Dr. Derek Provost, Pediatrician/Oncologist, Surrey
Sue Fisher, RN, Nursing Support Services Coordinator, White Rock/South Surrey Public Health Unit
Sara Smith, RN BSN, Nursing Support Services Coordinator, North Delta Health Unit
Karen Doolan, RN, Nursing Support Services Coordinator, Public Health, Burnaby
Cindy Tyler, Nursing Support Services Coordinator, Public Health, Maple Ridge



VANCOUVER COASTAL HEALTH AUTHORITY

Dr. Anne Antrim, Pediatrician, Vancouver Coastal

Sigrid Bailey, RN, Nursing Support Services Coordinator, Vancouver Coastal

Dr. Tina Wang, Psychologist, Department of Psychology, Children's & Women's Health Centre of BC

Kati Wambera, Neurologist, Children's & Women's Health Centre of BC

VANCOUVER ISLAND HEALTH AUTHORITY

Dr. Wilma Arruda, Pediatrician, Nanaimo

Deborah London, RN BSN, Pediatric Nurse Clinician, Victoria General Hospital

Denise Pond, RN, Clinical Coordinator Pediatric Unit/Pediatric Short Stay Clinic

Bev Groenewold, RN, Pediatric Registered Nurse

Jeanette Champagne, Social Worker

Margaret Salmon, RN, Clinical Coordinator, Comox Valley

Shelley Ord, Low Incidence Coordinator, Programs for Students with Special Needs, Comox Valley

Doug Barr, Facilitator, Community Living British Columbia, Comox Valley

Sara Carby, RN, Manager of Clinical Practice, Bayshore Home Health Care

OTHER

BC Centre for Ability

Tasha Carmichael, Physiotherapist, BC Centre for Ability, Vancouver

RESOURCE LIST

BC Epilepsy Society

A non-profit, charitable organization dedicated to serving the well being of people living with epilepsy. Their use website's "Resource" section provides epilepsy resources, including resources specifically for children & youth, treatment options, regulations, links to other related websites, and epilepsy lecture videos.

510—999 West Broadway
Vancouver, BC V5Z 1K5
tel: 604.875-6704 or 1.877.374-5377
info@bcepilepsy.com
www.bcepilepsy.com

BC Center for Ability

Provides programs and services to children, youth, and adults with disabilities and their families. They offer child development services, in school support, family counseling, recreational programs and employment programs.

2805 Kingsway
Vancouver, BC V5R 5H9
tel: 604.451.5511 fax: 604.451.5651
email: home@centreforability.bc.ca
www.centreforability.bc.ca

Building Capacity For Infant, Child and Youth Health Services

Child Health BC is a network of the province's five geographic health authorities, the Provincial Health Services Authority, Ministry of Health, MCFD, health professionals and care facilities dedicated to excellence in the care of infants, children and youth in British Columbia. A collaborative approach to child health ensures a quality of care beyond what any one agency can provide alone.

Child Health BC believes children should receive the right service at the right time, in the right place, by the right provider.

Through cooperative partnerships; regional subspecialty programs; education and dissemination; research; monitoring quality and performance; and developing standards, protocols and guidelines, Child Health BC is creating an integrated, standardized and accessible system of care available to all children in British Columbia.

NOTES:

WORKSHOP DETAILS

FRIDAY 30th MARCH

Registration will begin at 8:00 outside of the workshop room. A continental breakfast with coffee and tea will be available.

Lunch will be served in the Dockside Restaurant (located in the Granville Island Hotel). The evening reception and buffet dinner will also take place in a sectioned off area of the Dockside Restaurant. Guests may purchase their own alcoholic drinks at the restaurant bar.



SATURDAY 31st MARCH

A hot buffet breakfast will be served starting at 8:00 am through to 9:00 am.

CHECK OUT TIME

Please be aware that check out time is 12:00 pm. If requested, Granville Island Hotel may be able to extend your check out time to 12:30 pm. If you would like to extend your check out time please speak to hotel staff when you check in.

PARKING

Parking passes are available for workshop participants staying at the hotel and for workshop participants. **Please ask for a parking pass at the registration desk to place on your car.** This pass will allow you to park on the island longer than three hours.

EXPENSES

Reasonable travel expenses to participate in the workshop can be reimbursed. Please use the attached Expense form and send it along with your original receipts to Child Health BC.

GRANVILLE ISLAND

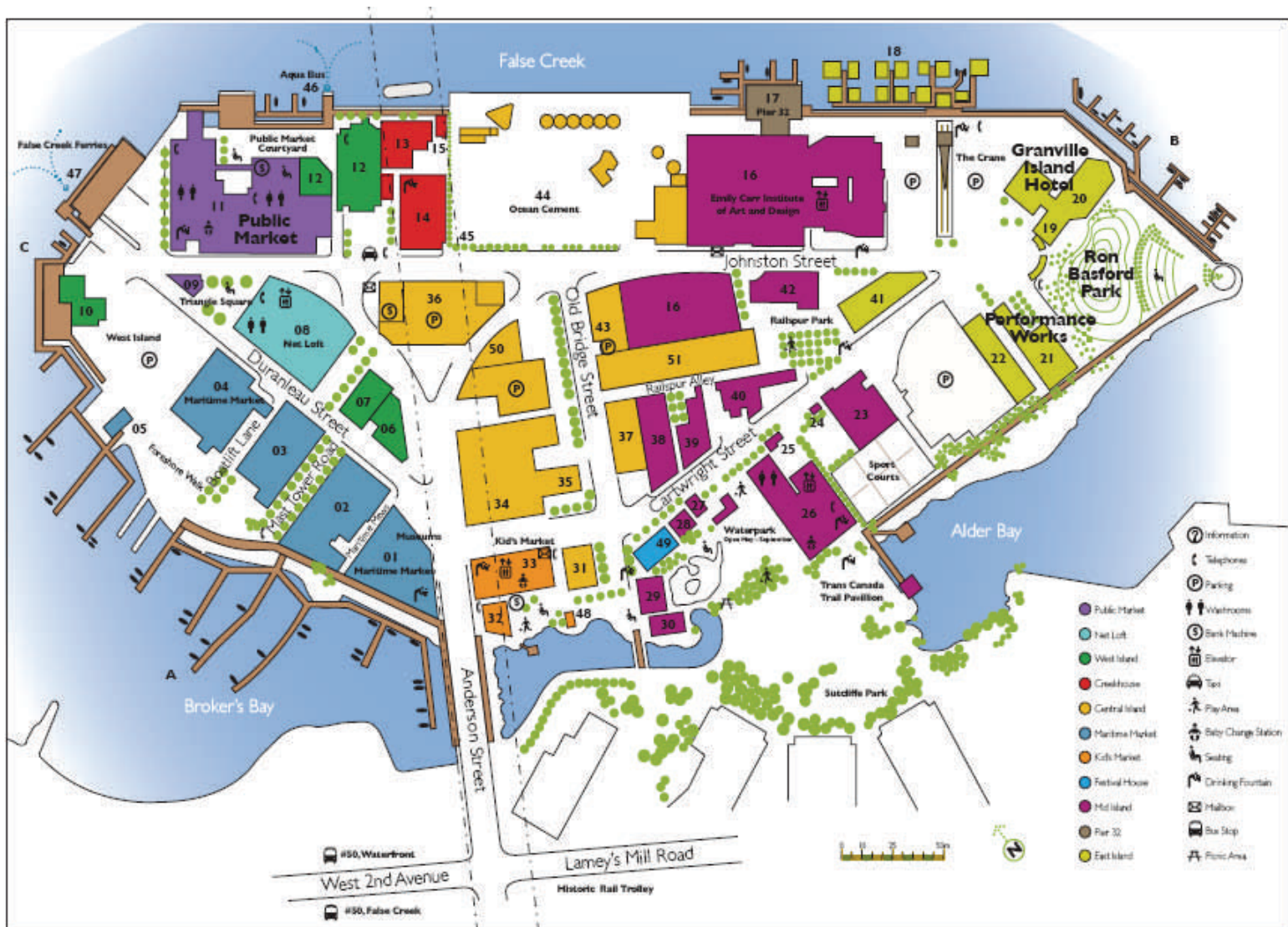
The Granville Island Hotel is located in the middle of Vancouver's False Creek, within easy walking distance of the Public Market and numerous shops and cultural activities.

Granville Island Hotel:

TELEPHONE: 1-800-663-1840 or (604) 683-7373

WEBSITE: www.granvilleislandhotel.com

ADDRESS: 1253 Johnston Street, Vancouver, BC



DIRECTIONS TO THE HOTEL:

The Hotel is located on the north east end of the island. Once you enter the Island the road will automatically make you turn right onto Cartwright Street at the Kids Market. Follow Cartwright Street to the very end (the hotel is located on the northeast tip of Granville Island where Cartwright meets Johnston Street.

The building is white with red trim and a fluorescent red sign that reads "The Granville Island Hotel".

Granville Island Directory

Public Market

- 11 À La Mode
- 11 Armando's Finest Quality Meats
- 9 La Baguette et L'Échalote
- 11 Blue Parrot Espresso Bar
- 11 Candy Kitchen
- 11 Celine's Fish & Chips
- 11 Duso's Spice Shop
- 11 Dussa's Ham & Cheese
- 11 Edible British Columbia
- 11 Four Seasons Farms
- 11 Fraser Valley Juice & Salad Bar
- 11 Gaia Garden Herbal
- 11 Gourmet Wok
- 11 Grainry
- 11 Granville Island Florist
- 11 Granville Island Produce
- 11 Granville Island Tea Co.
- 11 J.J. Bean
- 11 Kaisereck Delicatessen
- 11 Laurelle's Fine Foods
- 11 Lee's Donuts
- 11 Longliner Seafoods
- 11 Market Grill
- 11 Milkman
- 11 Muffin Granny
- 11 Non's Drinks to Go
- 11 Olde World Fudge
- 11 Onji Japan
- 11 Organic Connection
- 11 Oyama Sausage
- 11 The Perogy Place
- 11 Petit Ami Coffee
- 11 Phoenix Fast Food
- 11 Pizza Pazzz
- 11 Poultryland
- 11 Rubina Kitchen
- 11 Salmon Shop
- 11 Seafood City
- 11 Siegel's Bagels
- 11 The Smoke Shop
- 11 South China Seas
- 11 Spud The Organic Store
- 11 Stock Market
- 11 Stuart's Bakery
- 11 Sunlight Farms
- 11 Tenderland Meats
- 11 Terra Breads
- 11 La Tortilleria
- 11 Turkey Stop
- 11 V&J Plants
- 11 Zara's Pasta Nest

Net Loft

- 8 Amity Design Studio
- 8 Barbara-Jo's Books to Cooks
- 8 Beadworks

- 8 Blackberry Books
- 8 CMHC Granville Island Administration Offices
- 8 Circle Craft Co-op
- 8 Dundarave Print Workshop
- 8 Edie Hats
- 8 Fibre Art Studio
- 8 Geza Burghardt Luthieri
- 8 Gigi B
- 8 Granville Eyeland
- 8 Halfmoon
- 8 John Nutter Glass Studio
- 8 Kingsmill Pottery Studio
- 8 Kroma Artist Acrylics
- 8 Liberty Wine Merchants
- 8 Maiwa Handprints/Supply
- 8 The Market Kitchen
- 8 Mesa Contemporary Folk Art
- 8 Paper-Ya
- 8 The Postcard Place
- 8 Sevasty's Coffee Bar & Grill
- 8 Wickaninnish Gallery

Creekhouse

- 13 Boardwalk Gallery
- 14 Crash
- 14 Creekhouse Gallery
- 14 Dragonspace
- 13 GI Gelato & Coffee House
- 13 Hollyfields
- 14 Object Design
- 14 Rhinoceros
- 14 Roger's Chocolates
- 14 Sustainable Building Centre
- 14 StoneAge Art Company
- 14 The Tarot Room

Kids Market

- 33 Adventure Zone
- 33 Aunt Em's
- 33 Beanstalk Bistro
- 33 Camelot
- 33 Circuit Circus
- 33 Clownin' Around Magic
- 48 Crystal Ark
- 33 Funky Little Shop
- 33 The Granville Island Toy Co.
- 33 The Hairloft/Princess Spa
- 33 The Half Time Sports Gear
- 33 Humpty Dumpty Books&Music
- 33 I'm Impressed
- 33 Kaboodles
- 33 Kites & Puppets
- 33 Knotty Toys
- 33 Little Treasures
- 32 Pedro's Organic Coffee House
- 33 Post Office
- 33 Ribbit's Candy Corner

- 33 Scallywags
- 33 Stay Tooned
- 33 Toybox Studio
- 32 Umbrella Shop
- 33 Woolies & Meowz

Maritime Market

- C Accent Cruises
- 3 Aquarius Yachts
- 1 Blackfish Marine
- 4 Blue Ocean Yacht Services
- 2 Blue Pacific Yacht Charters
- A Boat Rental Jerry's
- 5 Bonnie Lee Charters
- 2 Chef & Colngrid DeHaan
- 3 Cooper Boating
- 2 False Creek Yacht Services
- 3 Fraser Yacht Sales
- 4 Freedom Marine
- 4 Frozen Ocean
- 4 Ecomarine Ocean Kayak Centre
- 1 Granville Island Museums
- C Granville Island Boat Rentals

- 2 Granville Island Organix
- 4 Granville Island Publishing
- 3 Granville Island Smokery
- 1 Granville Island Treasures

- 4 The Hang Out Place
- 4 Justin Seiches
- 2 K&D Marine
- 1 Lifestyle West
- 3 Lobsterman
- 5 Maritime Market Office
- 4 Mount Seymour Yacht Sales
- 2 Ocean Floor
- 2 Olympic Boat Centers
- 2 Psychic Studio
- 4 Quarterdeck
- 2 QuickNAV Boating School
- 2 Red Sky at Night
- C Rosella Yacht Charters
- 3 Roton Marine Electronics
- 1 Rowand's Reef Scuba Shop
- 3 S.C. Marine
- 3 Sandpiper's Studio
- 3 Specialties West
- 5 Specialty Yacht Sales
- 2 Travel Cuts
- 4 Tuulos Boat Works
- 1 Walrus & The Carpenter
- 2 Wild Whales Vancouver
- 4 Yacht Expert Repairs
- 2 Yacht Sales West

Maritime Market Studios

- 4 Anne Marie Harvey

- 1 Atelier Istanbul
- 2 Eagle Spirit Gallery
- 4 Jeanne Krabbendam
- 2 The Raven & The Bear
- 3 Michael Dean Jewellery Design
- 3 Stephanie Carter Illustration

Cartwright St. Studios

- 41 Ainsworth Custom Design
- 41 Alder Bay Boat Company
- 41 Black Stone Press
- 28 Crafthouse
- 35 Daniel Materna Ceramics
- 41 Federation of Canadian Artists Gallery
- 25 Forge & Form
- 38 Gallery of BC Ceramics
- 27 New Leaf Editions
- 41 Origins Coffee Co.

Old Bridge St. Studios

- 37 Granville Island Gallery
- 37 Hammered & Pickled
- 43 New-Small Sterling Glass Studio
- 43 Ken Rice Master Shoemaker
- 43 Per W. Madsen Fine Jewelry
- 43 Textile Context Studio

Railspur Alley

- 50 Aurum-Argentum Goldsmith
- 50 Daniel Stöckel Luthier
- 50 Funk Shui
- 50 Hartman Leather
- 50 Hilary Morris
- 50 i.e. Creative Artwork
- 50 In the Alley Gallery
- 50 Janis Dean Johnson
- 50 Jane McDougall
- 50 Michael den Hertog
- 50 Northwest Bungalow Furniture
- 50 Peter Kiss
- 50 Railspur Alley Bistro & Café
- 50 Sadryna Design
- 50 Usoja Designs

Restaurants & Cafes

- 12 Backstage Lounge
- 33 Beanstalk Bistro
- 10 Bridges Restaurant/Pub
- 29 The Cat's Meow Restaurant
- 19 Dockside Brewing Company
- 13 GI Gelato & Coffee House
- 6 The Keg Restaurant
- 11 Public Market Food Vendors
- 32 Pedro's Organic Coffee House
- 51 Railspur Alley Bistro & Café
- 1 Sammy J Peppers

- 13 The Sandbar Restaurant
- 8 Sevasty's Coffee Bar & Grill
- 1 Tony's Fish & Oyster Café

Theatres, Theatre Companies & Festivals

- 12 Arts Club New Revue Stage
- 12 Arts Club Theatre
- 36 Axis Theatre Company
- 35 Carousel Theatre Co.
- 49 G.I. Cultural Society
- 49 New Play Festival
- 21 Performance Works
- 49 Playwrights Theatre Co.
- 36 Professional Theatre Alliance
- 49 Ruby Slippers Production Co.
- 31 Waterfront Theatre
- 43 Wooden Boat Festival
- 49 Writers Festival

Industry

- 7 B&B Scale Models
- 22 Feathercraft Kayak
- 2 Granville Island Upholstery
- 37 Granville Island Woodworks
- 22 Joel Berman Glass Studio
- 36 Kiwi Creations
- 40 Micon Products
- 44 Ocean Construction Supplies

Services

- 11, 32, 36 Bank Machines
- 36 Currency Exchange
- 26 False Creek Community Centre
- 49 Festival Box Office
- 49 Granville Island Buskers Office
- 2 Granville Island Package Service
- 8 Lost & Found
- 17 Semperviva Yoga Centre

Building Legend

- 1-4 Maritime Market/ Boatyard
- 5 Yacht Charters & Cruises
- 6 The Keg Restaurant
- 7 Malaspina Print Makers/Island Studios
- 8 Net Loft
- 9 La Baguette et L'Échalote
- 10 Bridges Restaurant/Bar
- 11 Public Market
- 12 Arts Club Theatre/ New Revue Stage
- 13 Creekhouse
- 14 Creekhouse
- 15 Diana Sanderson Studio
- 16 Emily Carr Institute of Art & Design & Charles H. Scott Gallery
- 17 Pier 32

- 18 Sea Village
- 19 Dockside Brewing Company
- 20 Granville Island Hotel
- 21 Performance Works
- 22 Feathercraft Kayak/ Joel Berman Glass Studio
- 23 Arts Umbrella
- 24 Railspur Park Playground
- 26 False Creek Community Centre
- 27 New Leaf Editions
- 28 Crafthouse
- 29 Cat's Meow Restaurant
- 30 Picnic Area
- 31 Waterfront Theatre
- 32 Pedro's Organic Coffee House /Umbrella Shop
- 33 Kids Market
- 34 Granville Island Brewing Co.
- 35 Carousel Theatre Company/ Daniel Materna Ceramics
- 36 BC Wood Co-op
- 37 Old Bridge Studios
- 38 Arts Club Production Centre
- 39 Gallery of B.C. Ceramics
- 40 Micon Products Supplies
- 41 Cartwright Studios
- 42 Opus Framing & Art Supplies
- 43 Old Bridge Studios
- 44 Ocean Construction Supplies
- 45 Ocean Art Works
- 46 Aquabus Ferry Dock
- 47 False Creek Ferries Dock
- 48 Crystal Ark
- 49 Festival House
- 50 Railspur Alley Studios

Contact Us

CMHC Granville Island
1661 Duranleau Street, 2nd floor
Vancouver, BC, V6H 3S3
Tel: (604) 666-5784
www.granvilleisland.com
info@granvilleisland.com

Hours

Public Market
Open 7 days a week
9am-7pm

Net Loft
Open 7 days a week
10am-7pm

BEST PRACTICE IN EPILEPSY EXPENSE FORM

Name (Please
Print)

MAILING ADDRESS:

Please put the address you would like the cheque sent to:

E-mail Address:

Mileage	_____	\$	_____
Airfare	_____	\$	_____
Taxi	_____	\$	_____
Room	_____	\$	_____
Other	_____	\$	_____
		\$	_____
	Total	\$	_____

PLEASE LIST EXPENSES:

Please send this form with your original receipts to:

**Heather Chisholm
Child Health BC
Room 2H2—4480 Oak Street
Vancouver, BC V6H 3V4**

Tel: 604-875-2345 ex. 5305 Fax: 604-875-2074
E-mail: hchisholm@cw.bc.ca

**Special thanks to
our lead benefactor:**



**Room 2H2—4480 Oak Street
Vancouver, BC, V6H 3V4**

**Phone: 604.875-2345 ex. 5305
Fax: 604.875-2074**